



Plymouth Green Crossings is northeast Ann Arbor's new gateway development on ten acres on Plymouth Road at the northwest corner of Green Road. When completed, this environmentally friendly, mixed use residential and retail community will surround a six acre wetland. With guidance from a wetland consultant, this lush landscape will be enhanced, nurtured and protected for the community and its visitors. The views of this area are lovely from every level and the perimeter walking trails will provide an attractive and relaxing amenity.

Designed by Ann Arbor's own award winning architect, Damian Farrell of Integrated Architecture, Plymouth Green Crossings will include 33,000 square feet of high quality retail, restaurant and services. Current tenants include Ann Arbor's premier café "Sweetwaters Coffee & Tea", an old Michigan favorite restaurant, "Olga's Kitchen", and "Ink Stop" a growing computer and digital media products and services chain. A full service branch of Fifth Third Bank is open at the Plymouth Road entrance. These sought after, high quality establishments will perfectly blend convenience and necessity to enhance the lifestyle of the Plymouth Green Crossings loft tenants and the northeast Ann Arbor neighborhoods.

In two phases, thirty five urban style one and two level lofts will top the retail spaces of three primary buildings. Each building has video secure entries, an elevator and inviting entryways for you and your guests. Tall ceilings, large outdoor terraces and floor to ceiling glass make your loft perfect for entertaining, a work at home residence or your own personal sanctuary. Superb energy efficiency, dense sound insulation, deluxe kitchen and baths, custom window treatments, sleek and functional design and finishes, plus a garage is included with each loft. The third floor of each building boasts a 15 ft clerestory flooding the lofts with natural light and extra tall ceilings, plant shelves and interesting niches. Priced from \$1550—\$1950/month.

The location...is fantastic. Just minutes from The University of Michigan, St. Joseph Mercy Health System Hospitals, Toyota, NSK, Domino's Farms, Traverwood & Plymouth Business Parks, downtown Ann Arbor and our city's surrounding expressways that lead to anywhere you want to go...and back home to Plymouth Green Crossings.

For more information contact: Angie Rasmussen (734) 669-5846
 Cathy Petchell (734) 669-5810



One Level Model

PLYMOUTH GREEN
CROSSINGS



Prices, plans, specifications and availability are subject to change without notice.

Lofts at Plymouth Green Crossings

ONE LEVEL LOFT PLAN



Two Level Model

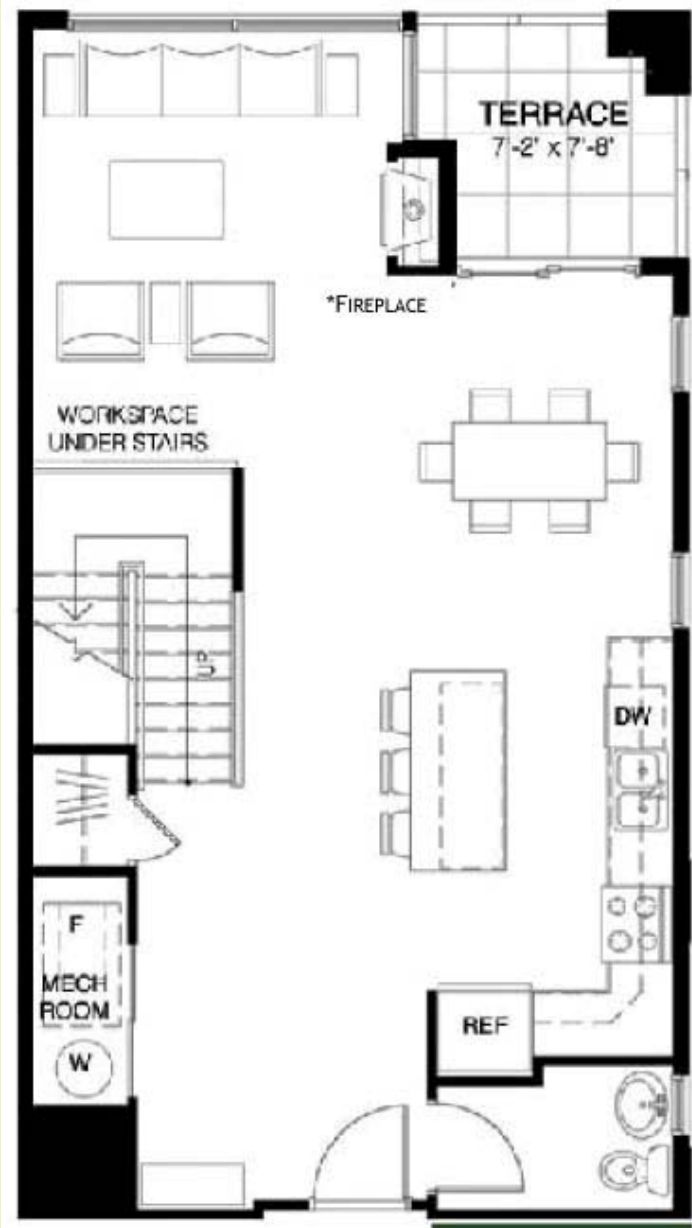
PLYMOUTH GREEN
CROSSINGS



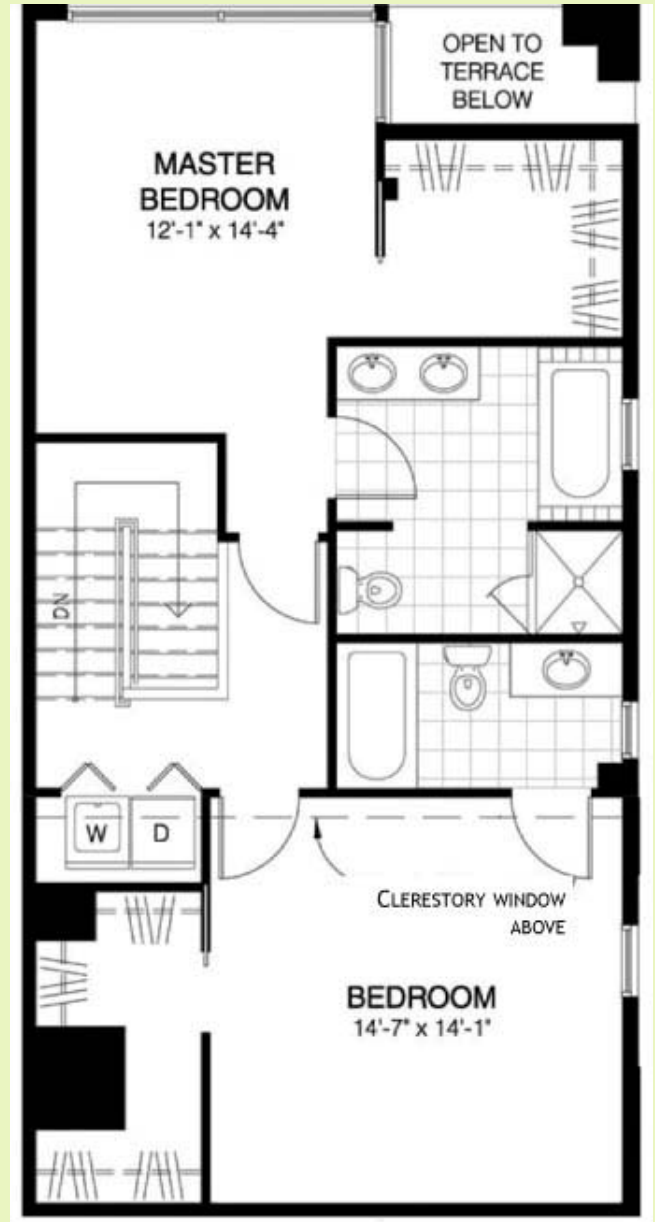
Prices, plans, specifications and availability are subject to change without notice.

Lofts at Plymouth Green Crossings

TWO LEVEL LOFT PLAN



FIRST LEVEL



SECOND LEVEL